

INTRODUCTION

Congratulations on purchasing NMS EMMA™ from NewMedia Solutions! NMS EMMA™ is an excellent quality digital TV antenna specially designed to receive Mediacorp’s digital TV channels; Channel 5, Channel 8, Channel U, Channel NewsAsia, Suria and Vasantham.



NMS EMMA™ has a built-in TV signal amplifier that can be powered by your set-top box or by your TV’s USB port to boost the signal strength further.

PRODUCT FEATURES

- SMD circuit technology design with shielding to minimise interference.
- Built-in high gain and low noise amplification of up to 40dB.
- Excellent reception for digital TV signals transmitted over UHF frequencies.
- Boosts TV signals by connecting the antenna’s USB connector to your TV’s USB port (or any USB power socket) or by switching on antenna power on your set-top box.
- Compatible with various digital terrestrial TV broadcast including DVB-T, DVB-T2, ISDB-T, DMB-T/H and ATSC.



TECHNICAL DATA

- Frequency range: UHF 470-862MHz
- Gain: Up to 40dB
- Max. output level: 100dBμV
- Power input: 5V/40mA via USB Connector
- Signal output: IEC 75Ω (male)
- Noise Figure: <3dB

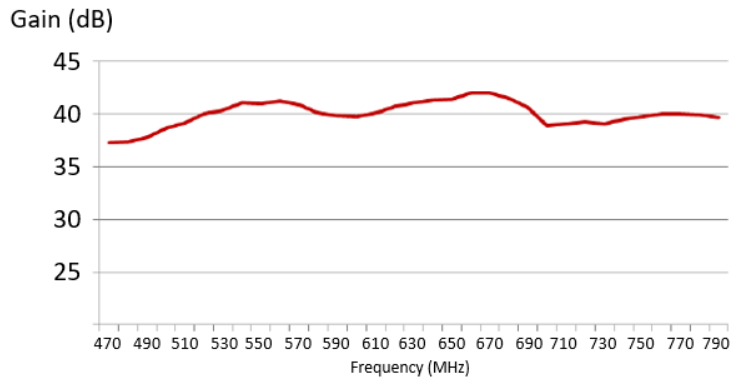
INCLUDED IN PACKAGE

- NMS EMMA™ Digital TV Antenna.
- 3M adhesive pad for attaching to the wall.
- Table stand for placing on TV console.
- This product manual.

SUPERIOR PERFORMANCE

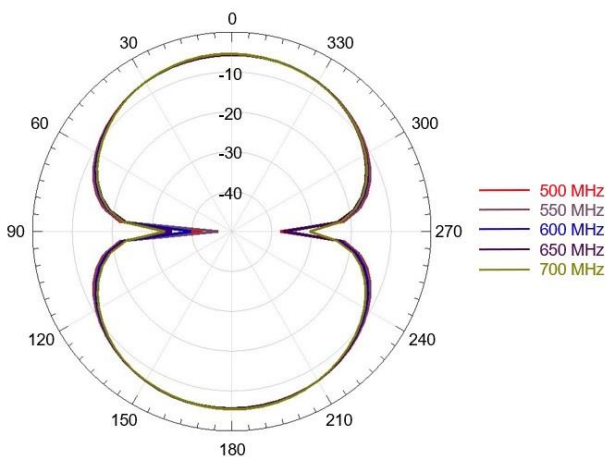
Antenna Gain

NMS EMMA™ is manufactured with advanced antenna technology to achieve among the highest gain when compared to other antennas in its class. NMS EMMA™ has a gain of up to **40dB** (or 25dBi compared to a reference isotropic radiator). The chart on the right shows the gain of NMS EMMA™ measured across the UHF frequency range.

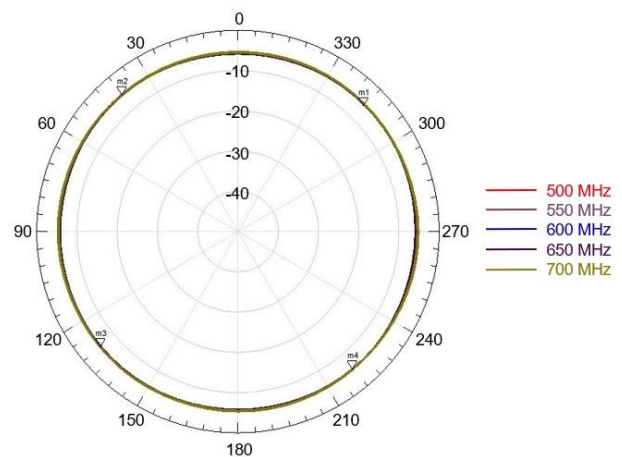


Antenna Radiation Pattern

The charts below show the excellent radiation capability of NMS EMMA™. NMS EMMA™ may be placed aesthetically on the TV console or attached to the wall in a horizontal or vertical position to achieve optimal signal reception.



Antenna Pattern - Horizontal



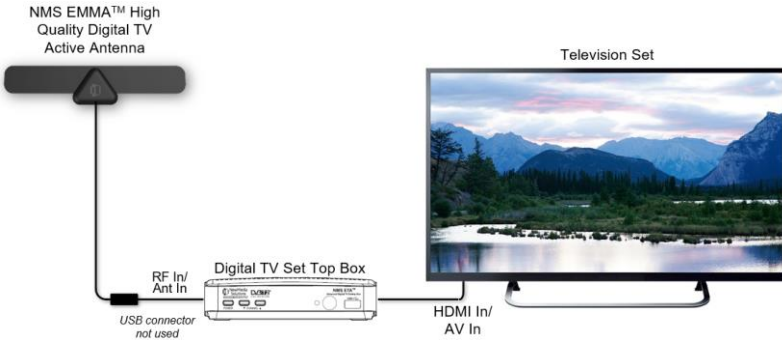
Antenna Pattern - Vertical

INSTALLATION

Before installing NMS EMMA™, please note the following.

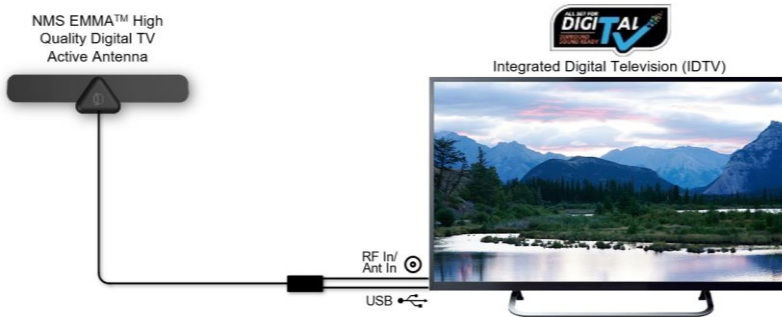
- Keep the antenna away for electronic devices such as audio amplifiers, wireless routers and air-conditioners as these devices may interfere with TV signals.
- Place the antenna near open areas such as the window or door and in a high position.
- Ensure cables are placed neatly and safe from being tripped over.

Connecting to a digital TV Set-top box



1. Connect the antenna's IEC connector to the RF In/Ant In port on your set-top Box.
2. Switch on your set-top box and ensure the antenna power setting is set to ON.
3. Switch on your TV and find the best location to place the antenna.
4. Place antenna on the TV console or on the wall using the 3M adhesive pad provided.

Connecting to an Integrated Digital TV (IDTV)



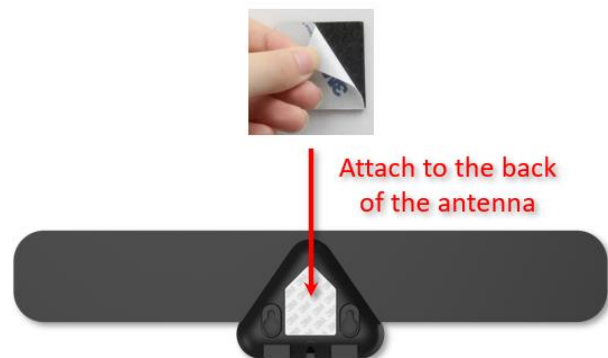
1. Connect the antenna's IEC connector to the RF In/Ant In port on your TV.
2. Connect the antenna's USB connector to the USB port on your TV or on an external USB socket.
3. Switch on your TV and find the best location to place the antenna.
4. Place antenna on the TV console or on the wall using the 3M adhesive pad provided.

Placing on Table Console



1. Attached the antenna to the table stand unit provided.
2. You will hear a click when the it is attached firmly.
3. Tuck the antenna cable neatly inside the cable groove line on the table stand unit.

Attaching to the Wall



1. Clean the area of the wall to attach the antenna.
2. Peel off the backing on one side of the 3M adhesive pad and attach it to the back of the antenna.
3. Peel off the backing on the other side and attach the antenna on the wall firmly.

For further information or technical enquiries, kindly contact us at the following:

Hotline: 6702 1180 (Operating hours: Monday - Friday 9am - 5pm excluding public holidays)

Email: support@nms.com.sg

Website: <http://nms.com.sg>